



# The RAYS Review



Sarasota Lutheran School, "A Ministry of Good Shepherd Lutheran Church"

January 2009

## CALENDAR

### January

- 5-Classes Resume
- 8-2nd Quarter ends  
6:30 PM-PTO/Science Fair
- 9-Noon Dismissal  
No Aftercare  
Professional Day
- 19- No School  
Martin L. King Day
- 20-School Board Mtg.
- 30-Dress Down Day

### February

- 2-Groundhog Day
- 4-Enrollment Fair  
3:00-6:00 PM
- 8-PS-K to sing @GSLC  
10:30 AM
- 13-Valentine Class Parties  
PTO Cookie Dough  
Fundraiser Begins
- 14-Happy Valentine's Day
- 17-School Board Meeting
- 25-Ash Wednesday  
Chapel @ 9:30 AM
- 27-Cookie Fundraiser Ends
- 28- Grades 1-8 sing @ GSLC  
5:30 PM  
NLSW Kick-off

### March

- 1-6 National Lutheran  
Schools Week-fun, fun, fun

## From the Principal

It's that time of year again. Time to start thinking about next year. Enrollment packets will be sent home around January 20. Enrollment to the public opens February 4 at the Enrollment Fair. Everyone is welcome to attend from 3:00 PM-6:00 PM.

Please turn in your enrollment forms in a timely manner. I must start thinking about staffing and room assignments for next year. It is impossible to pull together an accurate budget projection, if we don't know how many to expect for the next year. Don't forget about our Family Referral Reward Plan-one month free tuition.

One of the great things about our school is the nurturing family environment. The older students look out for the younger students and the younger students look up to the older ones. Chapel buddies help teach proper church behavior and team members support and cheer for one another. We all really care about each other. If someone is having a bad day, we give them a hug. If someone is having a great day, we celebrate with them. I can't think of any place that I would rather work.

Continued on page 3



Show your Stingray Pride-  
Put a Stingray on your ride!  
*Do you have your magnet?*

Get your car magnets in the office-\$2 donation

## 100/100 WOW!

### Positive, positive, positive-

We are encouraging positive attitudes and positive behaviors this year at SLS. Every student is on a team. We have six teams including the Parrots, the Hurricanes, the Mustangs, the Tigers, the Panthers and the Gators.

As of 12-3:

Parrots	180	Tigers	182
Hurricanes	139	Panthers	198
Mustangs	170	Gators	379

### Keep up the positive work!

Check the back hallway for weekly updates.



## THANKS TO ALL for purchasing SCRIP CARDS!

What a success—from October 6 to the end of the year \$30,026.16 worth of cards have been sold for a profit of \$1,437.12. \$16,819.16 worth of cards were purchased from December 1 to the end of the year.

The SCRIP Program really took off when Good Shepherd Lutheran Church's council loaned the program \$5,000.00 to allow us to purchase cards to be sold after each worship service. Please continue to purchase SCRIP for all your daily purchases. Tell your family and friends about SCRIP and encourage them to use our program.

For information and/or to place orders, you can call Harriet McDermott, the SCRIP Coordinator, at 921-3161.

By providing a safe and loving environment our students are able to develop to their fullest potential. They are able to build self-confidence. They are guided towards self-motivation and self-discipline. As teachers, we are able to help them learn positive life skills. Not only do we teach them solid academic skills, we are able to teach them about God's love. We are able to help them learn how to cope and deal with criticism and loss. We are able to help them learn how to deal with other people and how to think for themselves. We are able to provide them with skills that will last a lifetime.

Over 90% of our eighth graders graduate from high school and go to college. Some are even planning on continuing to graduate school. Many come back to visit us-to just hang out and remember how much fun they had. We have so many great memories together like SeaCamp, where Mrs. Leung broke the bus window with her head. Luckily, she wasn't seriously injured. Or "you know that time in class, when you..." So many great memories and so much love. That's what makes our school great!

Blessings--Mrs. Owens

You are invited  
to

ALPHA

What: Explore the questions of Life

When: First class is February 3 and will continue for 9 weeks

Where: Mennicke Hall

Cost: Free



Childcare Available

**Coming Soon...**

**In the next couple of weeks we will be able to accept Discover and American Express along with Visa and Mastercard.**

# Angel Food Ministries

This is not a fundraiser!

Angel Food Ministries ([www.angelfoodministries.com](http://www.angelfoodministries.com)) offers families balanced nutrition and variety with enough food to feed a family of four for a week. If you eat, you qualify! This is the menu for the month of January – all for \$30!

1.5 lb. Ribeye Steak (4 x 6 oz.)

4 lb. Leg Quarters

1.5 lb. Beef Patties (4 x 6 oz.)

18 oz. Cheese Filled Manicotti

2 lb. Pork Rib Strips

1 lb. Chicken Breast Fajita Strips

1 lb. Ground Turkey

1 lb. Broccoli

1 lb. Peas

6 ct. Oatmeal Variety Box

2 each-Regular, Maple Brown Sugar and Apple Cinnamon

32 oz. 2% Shelf Stable Milk

8 oz. Blueberry Muffin Mix

12 ct. White Corn Tortillas

1 lb. Pinto Beans

7 oz. Chicken Flavored Rice & Vermicelli

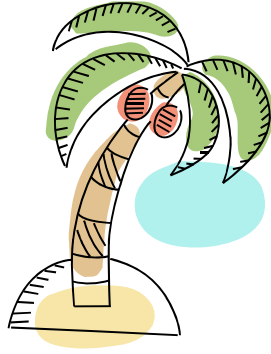
One Dozen Eggs

Dessert Item

Check out the website to see other "special boxes" that are also available. Please order by January 12 and pick up at Concordia Lutheran Church on January 24. Phone Ellen Gaulke, 400-6463 for more information. More than 500,000 families a month, nationwide, purchase Angel Food boxes. Who doesn't want to save money!?!



# Save the Date



2009 Spring Gala  
Silent and Live Auction

March 20, 2009

6:00-10:00

At the Polo Grill and Bar

Located on Main Street in Lakewood Ranch

Dress: Caribbean Casual



Get them WHILE they're HOT!

Stingray Reusable Bags

1 for \$3 or 2 for \$5