



# The RAYS Review



Sarasota Lutheran School, "A Ministry of Good Shepherd Lutheran Church"

February 2009

## CALENDAR

### February

- 2-Groundhog Day
- 4-Enrollment Fair  
3:00-6:00 PM
- 8-PS-K to sing @GSLC  
10:30 AM
- 13-Valentine Class Parties  
PTO Cookie Dough  
Fundraiser Begins
- 14-Happy Valentine's Day
- 17-School Board Meeting
- 25-Ash Wednesday  
Chapel @ 9:30 AM
- 27-Cookie Fundraiser Ends
- 28- Grades 1-8 sing @ GSLC  
5:30 PM  
NLSW Kick-off

### March

- 1-6 National Lutheran  
Schools Week-fun, fun, fun
- 6-13 Book Fair
- 8-Daylight Saving Time  
begins
- 10-Kindergarten Open House  
9:00AM & 5:30 PM
- 12-PTO Pizza and Bingo  
6:30 PM
- 16-3rd Quarter Ends
- 17-St. Patrick's Day
- 20-Professional Day
- No School/**The Spring  
Gala 6:00 PM**
- 24-School Board Mtg.
- 27-Dress Down Day
- 30-Testing Week

### *From the Principal*

You are all invited to the Annual Spring Gala on March 20. It will be a fun filled evening and a time to make new friends or renew acquaintances. Our theme this year is Caribbean Casual and our fare will follow theme with food stations serving- Coconut Shrimp, Conch Fritters, Wahoo Wonton Fish Tacos, Beef Teriyaki, Crispy Chicken & Pineapple, Jerk Pork Loin, Mashed Plantains, and Papaya Flambé. Yum! Please plan on joining us and supporting the Best School in Sarasota County! If you or your friends would like to donate items for auction, please contact the office. We are currently gathering donations and I could use a little help.

Here at SLS we really believe that every child should have the opportunity to develop and learn their God given talents. Every child is blessed with some type of intelligence. Harvard Professor Howard Gardener first published his theory of Multiple Intelligences in 1993. He believes that children take in and process information in different ways, but that every child is able to learn. His original theory listed seven intelligences: linguistic intelligence, spatial intelligence, logical-mathematical intelligence, bodily-

*Continued on page 3*

*Enrollment is now open to the public.  
Please make sure that your paperwork is  
turned in as we are making plans for next  
year.*

## 100/100 WOW!

### Positive, positive, positive-

We are encouraging positive attitudes and positive behaviors this year at SLS. Every student is on a team. We have six teams including the Parrots, the Hurricanes, the Mustangs, the Tigers, the Panthers and the Gators.

As of 2-3:

Parrots	80	Tigers	74
Hurricanes	52	Panthers	61
Mustangs	62	Gators	80

### Keep up the positive work!

Check the back hallway for weekly updates.



## Get Your Pictures in the 2009 Yearbook!

Dear SLS Parents and Students,

Get your pictures in the yearbook! You are invited to submit photos for the 2008/2009 yearbook. If you've got great photos of school events, field trips or of students just having fun this year, I'd like to see them. Are there any photos out there from the 2008 Middle School Sea Camp trip?? I have some, but I wouldn't mind a few more!

Here is how you can submit photos online:

- Go to: <https://images.jostens.com>
- If it does not automatically log you in the site, enter username: 1220778 and password: rays2009
- Browse to select the photo(s) you wish to upload.
- Enter information about the photo and provide contact information in case additional information is needed.
- Click "Save Details"

It's that easy! Submit your photos today. The last day to submit photos is 2/28/09...but earlier is better...my yearbook deadline is March 16th and it is fast approaching.

Thank you in advance. Please call me at 714-0141, if you have any questions.

Heidi Brannan

kinesthetic intelligence, musical intelligence, interpersonal intelligence, and intrapersonal intelligence. He has since added naturalistic and existentialism intelligences. Gardner defines intelligence as "the capacity to solve problems or to fashion products that are valued in one or more cultural settings."

Here at SLS we believe that this is a great model for differentiating instruction and reaching all different types of learners. It's also a great way to reinforce skills and teach for mastery. For example a bodily-kinesthetic learner may have trouble sitting in their seats, listening to a lecture, and taking notes. However turn the lesson into a hands-on activity and they excel. A child with strong musical skills may have trouble learning their multiplication tables, but once they set it to music -problem solved! This approach helps build self-confidence and helps every child believe that they can learn anything. As a teacher it is always a great joy to see the "light bulb" and a bright smile spread across a little face. That's what makes teaching so rewarding. I

Blessings-Mrs. Owens

You are invited  
to

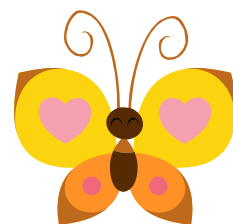
*ALPHA*

**What:** Explore the questions of Life

**When:** First class is February 3 and will continue for 9 weeks

**Where:** Mennicke Hall

**Cost:** Free



*Childcare Available*

## **Yearbook Ads**

All proceeds raised will be donated to the Sarasota Lutheran School Scholarship Fund.

Choose from four different size ads:

Business card size:	\$15	2" x 3 1/4"
Quarter Page:	\$30	4" x 3 1/4"
Half Page:	\$60	4" x 6 1/2"
Full Page:	\$120	8" x 6 1/2"



# Angel Food Ministries

This is not a fundraiser!

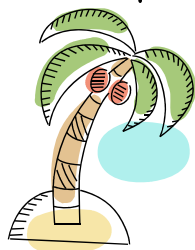
Angel Food Ministries ([www.angelfoodministries.com](http://www.angelfoodministries.com)) offers families balanced nutrition and variety with enough food to feed a family of four for a week. If you eat, you qualify! This is the menu for the month of February – all for \$30!

- 1.5 lb. Sirloin Strip Steak (4 x 6 oz.)
- 2 lb. Tray Pack Chicken Breast
- 1 lb. Boneless Pork Chops
- 2 lb. Breaded Chicken Nuggets
- 28 oz. Salisbury steak Entree
- 1.2 oz. Sliced Bacon
- 1 lb. All-Meat Hot Dogs
- 1 lb. Stir Fry (Broccoli, Red Peppers & Onions)
- 1 lb. Carrots
- 10 oz. Peanut Butter
- 32 oz. 2% Shelf Stable Milk
- 35 oz. Crinkle-Cut Fries
- 7.25 oz. Mac 'n Cheese
- 1 lb. Rice
- 1 lb. Bean Soup Mix
- One Dozen Eggs
- Dessert Item



Check out the website to see other "special boxes" that are also available. Please order by February 16 and pick up at Concordia Lutheran Church on February 28. Phone Ellen Gaulke, 400-6463 for more information. More than 500,000 families a month, nationwide, purchase Angel Food boxes. Who doesn't want to save money!?!

YOU ARE INVITED...  
WATCH FOR YOUR INVITATIONS IN THE MAIL!



2009 Spring Gala  
Silent and Live Auction  
March 20, 2009  
6:00-10:00  
At the Polo Grill and Bar  
Located on Main Street in Lakewood Ranch  
Dress: Caribbean Casual

JOIN US FOR A NIGHT OF FUN, FOOD, AND FELLOWSHIP!  
WE HOPE TO SEE YOU ALL THERE.



Get them WHILE they're HOT!

Stingray Reusable Bags

1 for \$3 or 2 for \$5

Join us Sunday, February 8  
@ 3:00 PM for Pastor Cockey's Installation  
Service

We are so glad that Joe, Carolyn, Joshua, and  
Alex are here!